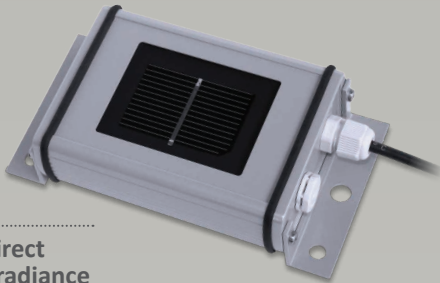
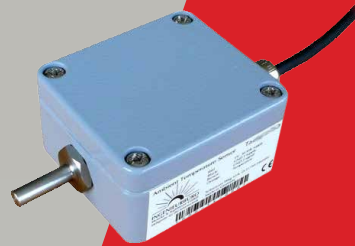


## Environmental Sensors

SE1000-SEN-IRR-S1 / SE1000-SEN-TAMB-S2  
SE1000-SEN-TMOD-S2 / SE1000-SEN-WIND-S1



▶ Direct Irradiance sensor



▶ Ambient Temperature sensor



▶ Module Temperature sensor



▶ Wind Velocity sensor

### Environmental Monitoring of your SolarEdge System

- Connect environmental sensors to the SolarEdge Control and Communication Gateway for monitoring of your site
- Used to calculate site performance ratio
- Irradiance, temperature and wind measurements



# Environmental Sensors

SE1000-SEN-IRR-S1 / SE1000-SEN-TAMB-S2 / SE1000-SEN-TMOD-S2 / SE1000-SEN-WIND-S1

	Direct Irradiance SE1000-SEN-IRR-S1	Ambient Temperature SE1000-SEN-TAMB-S2	Module Temperature SE1000-SEN-TMOD-S2	Wind Velocity SE1000-SEN-WIND-S1	Units
<b>OUTPUT</b>					
Electrical output range	0-1.4V	0-10V	4-20mA	4-20mA	
<b>MEASUREMENT</b>					
Range	0-1400 W/m <sup>2</sup>	-40 to 90 °C / -40 to 194 °F	-40 to 90 °C / -40 to 194 °F	0-50 m/s	
Accuracy	±5%	1% of full scale	1% of full scale	±0.5 m/s or ±3% of measuring value	
<b>INSTALLATION SPECIFICATIONS</b>					
Control and Communication Gateway (sold separately; SE1000-CCG-G)	Needed				
Dimensions	154 x 86 x 40 / 6 x 3.5 x 1.5	64 x 58 x 34 / 2.5 x 2.3 x 1.3	64 x 58 x 34 / 2.5 x 2.3 x 1.3	165 x 105 x 105 / 6.5 x 4.2 x 4.2	mm / in
Weight	340 / 0.75	350 / 0.77	350 / 0.77	750 / 1.65	gm / lb
Enclosure type	Powder-coated aluminum	Pulver Coated Aluminium	Pulver Coated Aluminium	Housing - Aluminum (AlMgSi1) Cup star - Synthetic, with fibre glass (PC-GF10) Bottom - Synthetic (POM H2320)	
Operating Temperature	-20 to 70 / -4 to 155	-40 to 80 / -40 to 176	-40 to 80 / -40 to 176	0 to 70 / 32 to 155	°C / °F
Protection Rating	IP65	IP67	IP67	IP55	

The warranty and service for the sensors is provided directly by Ingenieurbüro Mencke & Tegtmeier GmbH; for more details, please see <http://www.imt-solar.com/products.html>

