

PV 224S0F3CXXV000TAPA15PWW

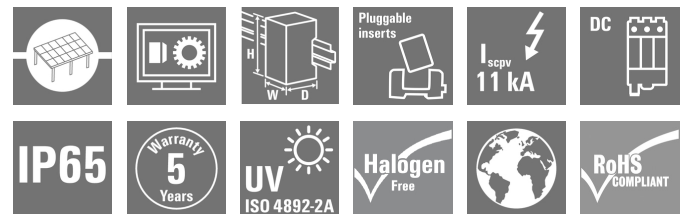
Weidmüller Interface GmbH & Co. KG

Klingenbergstraße 26

D-32758 Detmold

Germany

www.weidmueller.com



Standard portfolio for combiner boxes.

Protect and monitor strings in a solar park.

Weidmüller has developed a full portfolio of standard PV DC combiner boxes for solar parks. These products intend to cover the most common used solutions for such purposes in an efficient and competitive manner. From 6 up to 32 inputs our Generation X offers a full range of products for monitored and non-monitored combiner boxes allowing our customer to benefit from Weidmüller's experience and commitment to quality. Gen X

General ordering data

Version	Photovoltaics, Assembled enclosure, Combiner Box, 1500 V, With fuse holder, Surge protection II, Cable gland, for wall mounting, Switch disconnecter, Portrait, Current monitoring, Voltage monitoring, Temperature monitoring, Central Inverter
Order No.	8000093500
Type	PV 224S0F3CXXV000TAPA15PWW
GTIN (EAN)	4064675853848
Qty.	1 pc(s).

Creation date October 16, 2024 10:34:29 AM CEST

Catalogue status 12.10.2024 / We reserve the right to make technical changes.

PV 224S0F3CXXV000TAPA15PWW

Weidmüller Interface GmbH & Co. KG
 Klingenbergstraße 26
 D-32758 Detmold
 Germany

www.weidmueller.com

Technical data

Dimensions and weights

Depth	300 mm	Depth (inches)	11.811 inch
Height	847 mm	Height (inches)	33.346 inch
Width	636 mm	Width (inches)	25.039 inch
Net weight	23,691.146 g		

Temperatures

Ambient temperature	-20°C to +45 °C	Operating temperature	-20°C to +45 °C
---------------------	-----------------	-----------------------	-----------------

DC electrical properties

Earthing	Directly at the VPU	Rated voltage	1,500 V
Surge protection DC side	1500 V type II with remote contact	Switching capacity	400 A (DC21B 1500 V)

DC inputs

Cartridge fuse	10 x 85 mm		
Connection DC input cable (+)	Screw connection		
Connection DC input cable (-)	Screw connection		
Connection type, DC input cable	Cable gland		
DC Input + & -	Wire connection	Type of connection	M16 Cable gland
	Cable entry	Number of cable entries	48
		Cable diameter, min.	5 mm
		Cable diameter, max.	10 mm
Functional earth connector	Cable entry	Number of cable entries	1
		Cable diameter, min.	6 mm
		Cable diameter, max.	12 mm
	Wire connection	Type of connection	M20 Cable gland
Fuse	Empty fuse holder		
Fuse	15 A, 16 A, 20 A, 25 A, 30 A, 32 A		
Fuse type	Empty fuse holder		
Fuse-link standard	gPV (EN 60269-6)		
Fused poles of string	+/-		
Number of DC inputs	24		
Number of conduit inlets	53		
Number of inputs	24		
Position of the fuses	positive and negative inputs		

DC outputs

DC Output + & -	Wire connection	Type of connection	M40 Cable gland
		Wire cross-section, min.	150 mm ²
		Wire cross-section, max.	300 mm ²
DC output cable connection	M10 bolt and nut connection		
Load circuit breaker with auxiliary contact	No		
Number of DC outputs	2		

PV 224S0F3CXXV000TAPA15PWW

Weidmüller Interface GmbH & Co. KG

Klingenbergstraße 26

D-32758 Detmold

Germany

www.weidmueller.com

Technical data

DC string monitoring

Current monitoring	Solar SMS	Monitoring function	Solar SMS, Output voltage, current, temperature
Supply	Self-powered	Temperature monitoring	Solar SMS
Voltage monitoring	Solar SMS		

Housing

Protection degree	IP65	Type of mounting	Wall mounting
-------------------	------	------------------	---------------

Norms and standards

Standards	EN 61439-2:2011, IEC 61439-2 ed 3.0
-----------	-------------------------------------

Classifications

ETIM 6.0	EC002928	ETIM 7.0	EC002928
ETIM 8.0	EC003857	ETIM 9.0	EC003857
ECLASS 9.0	22-57-92-03	ECLASS 9.1	22-57-02-90
ECLASS 10.0	22-57-02-90	ECLASS 11.0	22-57-02-92
ECLASS 12.0	22-57-02-92	ECLASS 13.0	22-57-02-92
ECLASS 14.0	22-57-02-92		

Environmental Product Compliance

RoHS Compliance Status	Compliant with exemption
RoHS Exemption (if applicable/known)	6c, 7a, 7cl
REACH SVHC	Lead 7439-92-1
SCIP	1d28ada4-1634-4382-8635-45f6353a6574

Approvals

Approvals



ROHS	Conform
------	---------

Downloads

Approval/Certificate/Document of Conformity	EU Declaration of Conformity Combiner Boxes monitored
Engineering Data	Electrical Drawing Thermal Report
Technical Documentation	Mechanical Drawing
User Documentation	User Manual PV DC Combiner Boxes
Catalogues	Catalogues in PDF-format

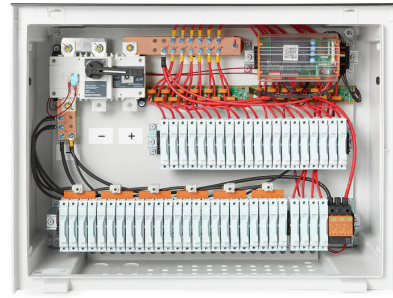
Data sheet

PV 224S0F3CXXV000TAPA15PWW

Weidmüller Interface GmbH & Co. KG
Klingenbergstraße 26
D-32758 Detmold
Germany

www.weidmueller.com

Drawings



PV 224S0F3CXXV000TAPA15PWW

Weidmüller Interface GmbH & Co. KG
 Klingenbergstraße 26
 D-32758 Detmold
 Germany

www.weidmueller.com

Drawings

Combiner Box Name Description

PV 2 24 S0 FX CXX VX OX TXPX 15 P F ES

