

# SMARTFOX

## ENERGY METER 3-ph

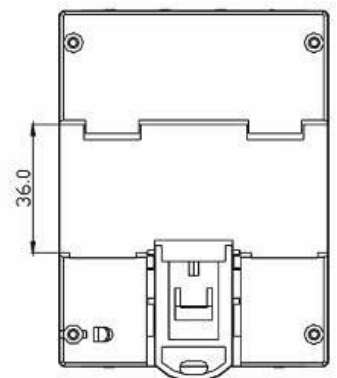
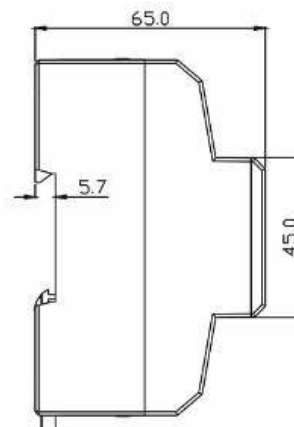
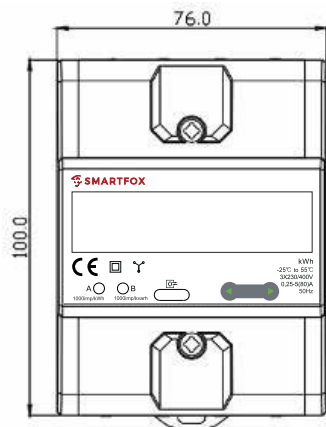
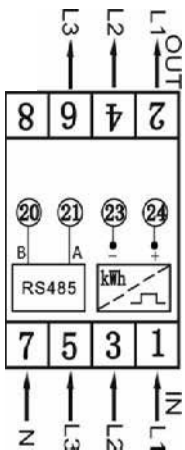
Three-phase meter (80A) with RS485 & S0 interface



EN

### Data sheet

The SMARTFOX Energy Meter is a device to measure and monitor the electricity consumption of a three-phase network. The measured values are shown on an LCD display. Via RS485 (Modbus RTU) or S0-Interface the Energy Meter can be linked to a SMARTFOX Pro or SMARTFOX Meter device. You can connect generators (PV inverter, hydropower station...) or consumers (heat pumps, car chargers...) to display the values in the monitoring system [my.smartfox.at](http://my.smartfox.at).

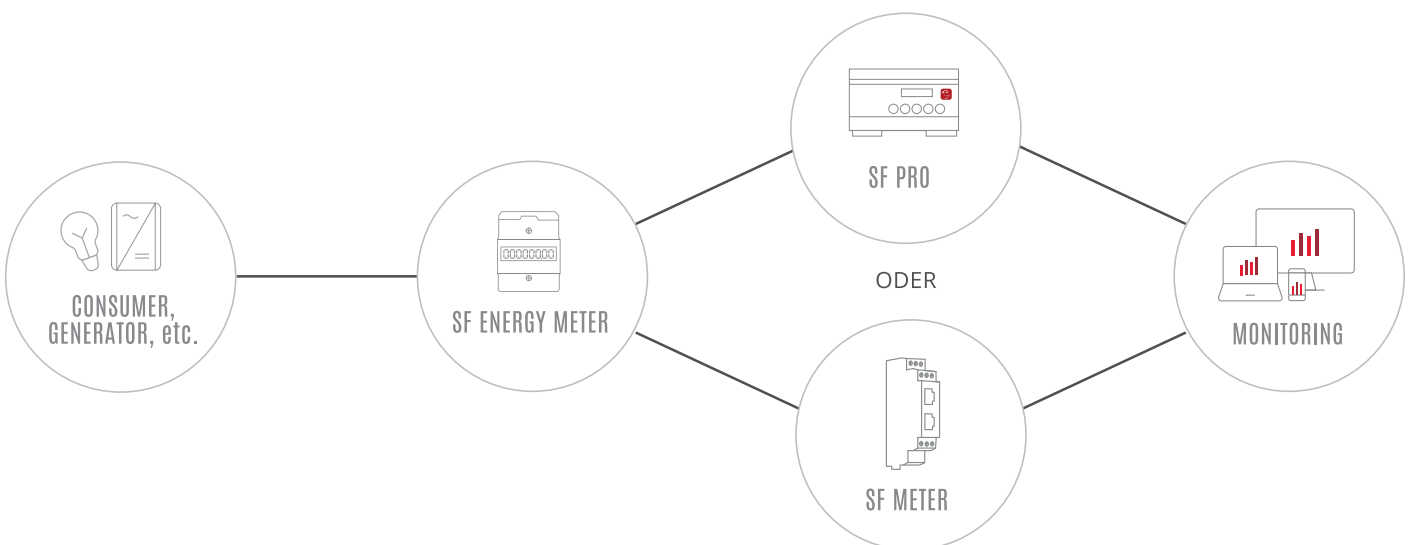



## Technical specifications


Conformity	2014/32/EU
Norm	IEC62052-11, IEC62053-21, EN50470-1/3
Rated voltage / frequency	3x230/400V, 50Hz
Starting current	0,02A
Min. current	0,25A
Base current	5A
Max. current	80A
Accuracy class	B
LCD	LCD 6+2 = 123456.12
Working temperature	-25~55°C
Own consumption	≤8 VA, ≤0,4 W
Maximum humidity	≤75%
Pulse length	90 ms (modular)
Pulse output voltage range	12-27VDC
Pulse output current	≤ 27mA
Materials	PBT / PC
Protection level	IP51
Max. cross-section of wires	16 mm <sup>2</sup>
Installation	DIN Schiene TH-35 / DIN rail
Width	76,11mm (TE 4)
Weight	0,425kg

<b>Type</b>	
Meter constant	1000
Meter constant settings	1 / 10 / 100 / 1000
Pulse output S0 open-type collector	JA
IR Port	JA
RS485, Modbus-RTU	JA
Memory support	EEPROM

<b>Measuring mode</b>	
Active and reactive power	x
Four-quadrant, Active and reactive power in both directions	x



 Follow us on facebook & instagram!

 smartfox\_energiemanagement