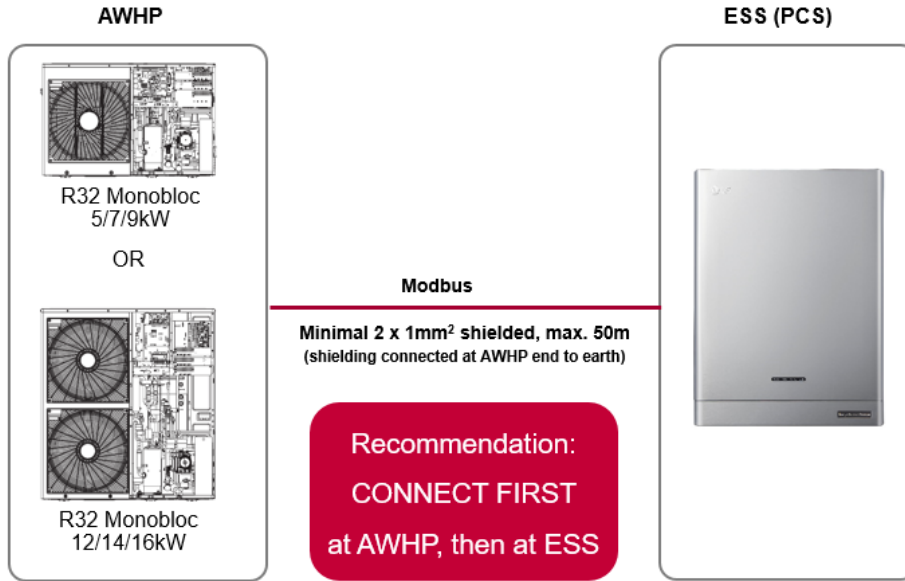


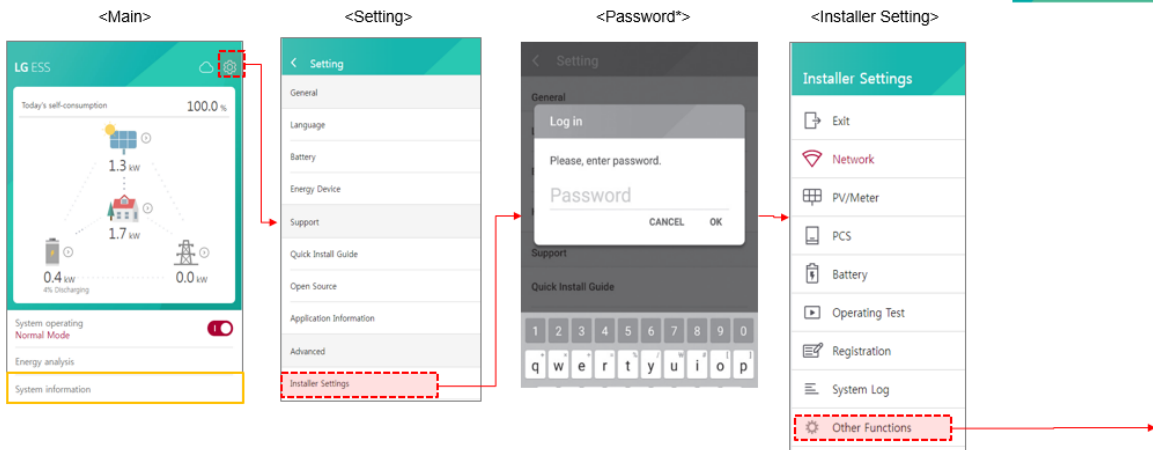
LG ESS HOME SOLUTIONS – LG ENERGY PACKAGE INSTALLATION COMMUNICATION CABLE



LG ESS HOME SOLUTIONS – LG ENERGY PACKAGE CHECK SETTINGS @ LG ESS ENERVU APP: PROTOCOL



Setting > Installer Setting > Other Functions > Heat Pump

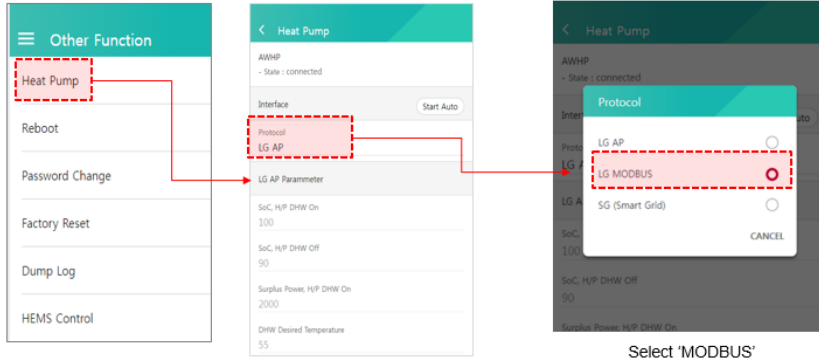


*Installer Setting Password is the REGISTRATION NUMBER shown in „System Information“

LG ESS HOME SOLUTIONS – LG ENERGY PACKAGE CHECK SETTINGS @ LG ESS ENERVU APP: PROTOCOL



Setting > Installer Setting > Other Functions > Heat Pump > Protocol > MODBUS

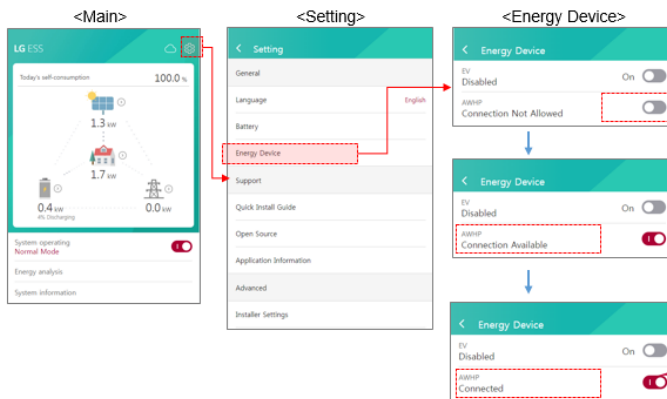


LG ESS HOME SOLUTIONS – LG ENERGY PACKAGE CHECK SETTINGS @ LG ESS: PROTOCOL



Setting > Installer Setting > Other Functions > Heat Pump > Protocol > MODBUS

• Path : Setting > Energy Device



| AWHP Status | Description |
|------------------------|---|
| Connection Not Allowed | AWHP setting is disable |
| Connection Available | AWHP setting is enable but not connected *After changing the setting from Off to On, initially it displays this status, and after few seconds it changes to 'Connected' if the connection is succeeded |
| Connected | AWHP setting is enabled and connected *If this status is not shown in the end, please make sure that the communication cable is connected properly |

Shows **CONNECTED** when communication is given

check 'Connected' message is shown